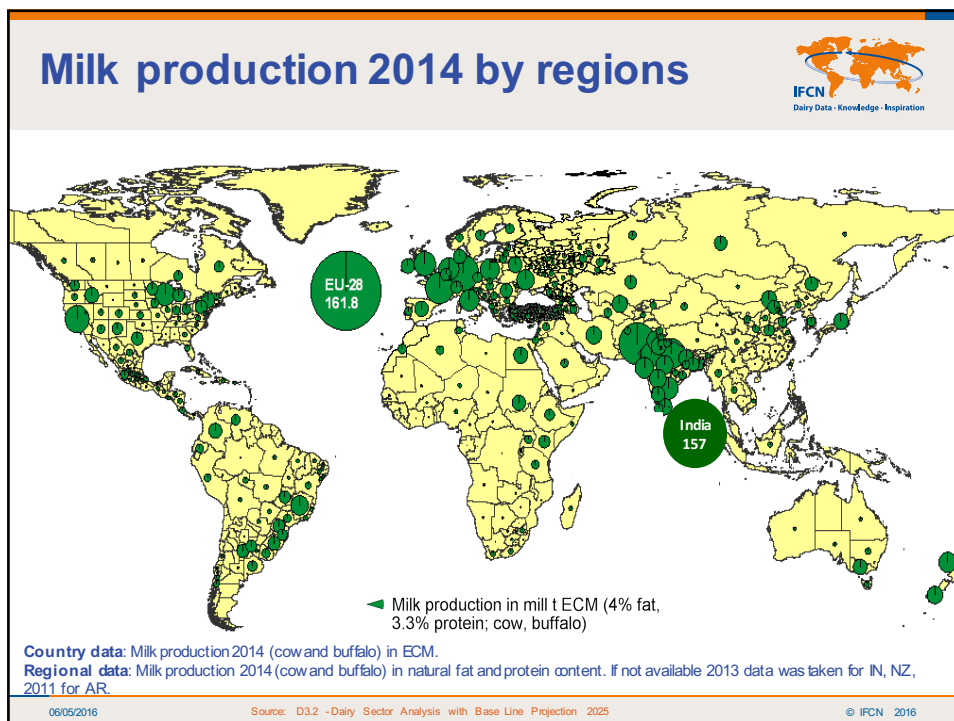


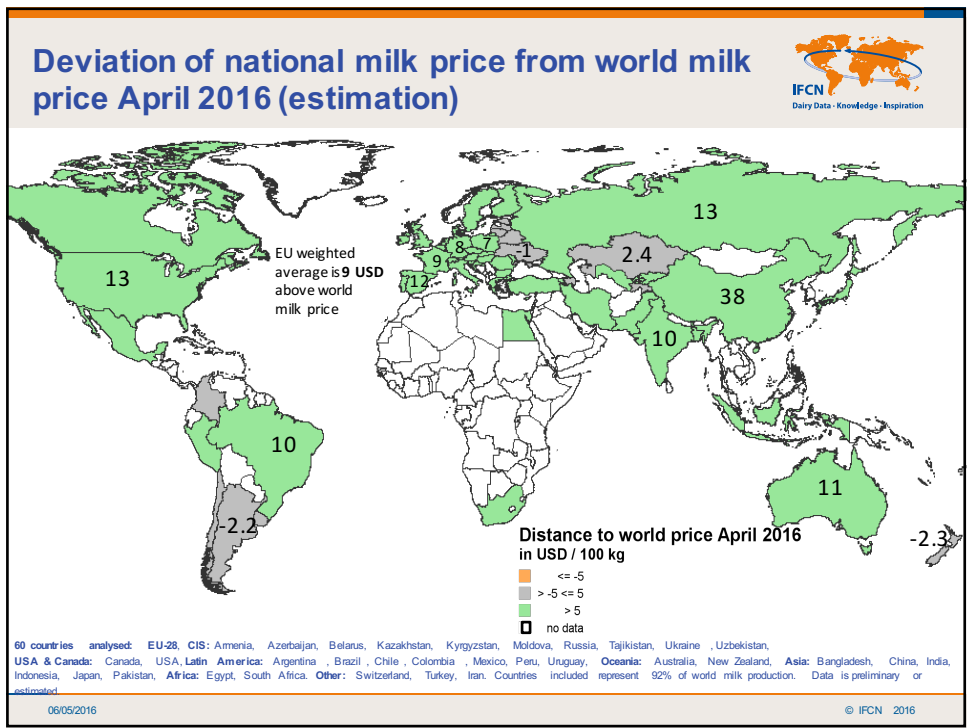
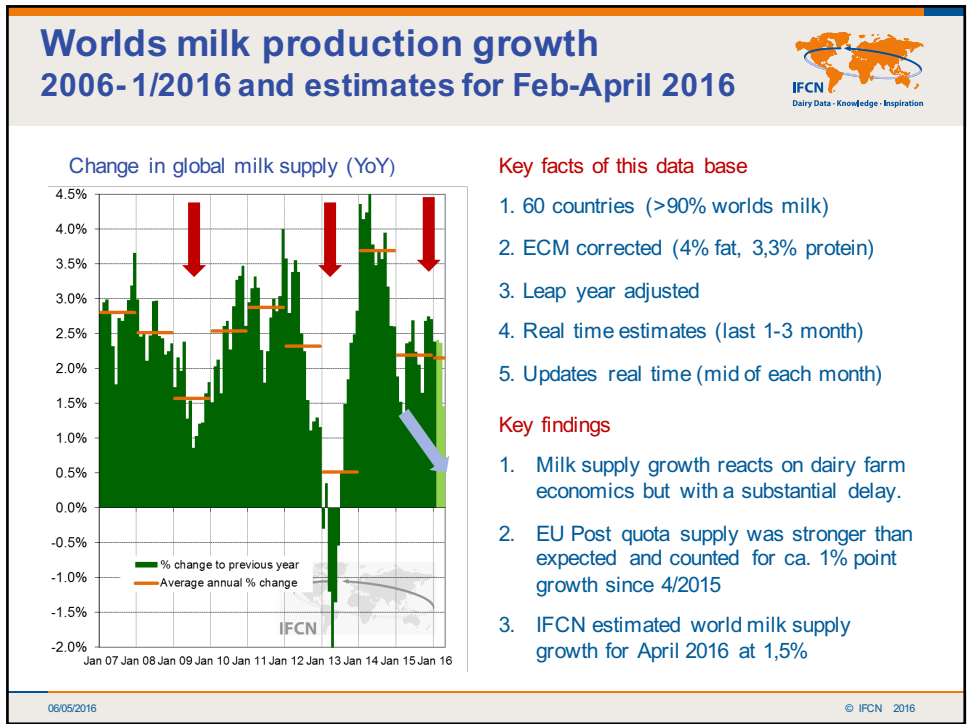
Global Perspectives on Milk Production, Dairy Demand, Prices and Risk Changing

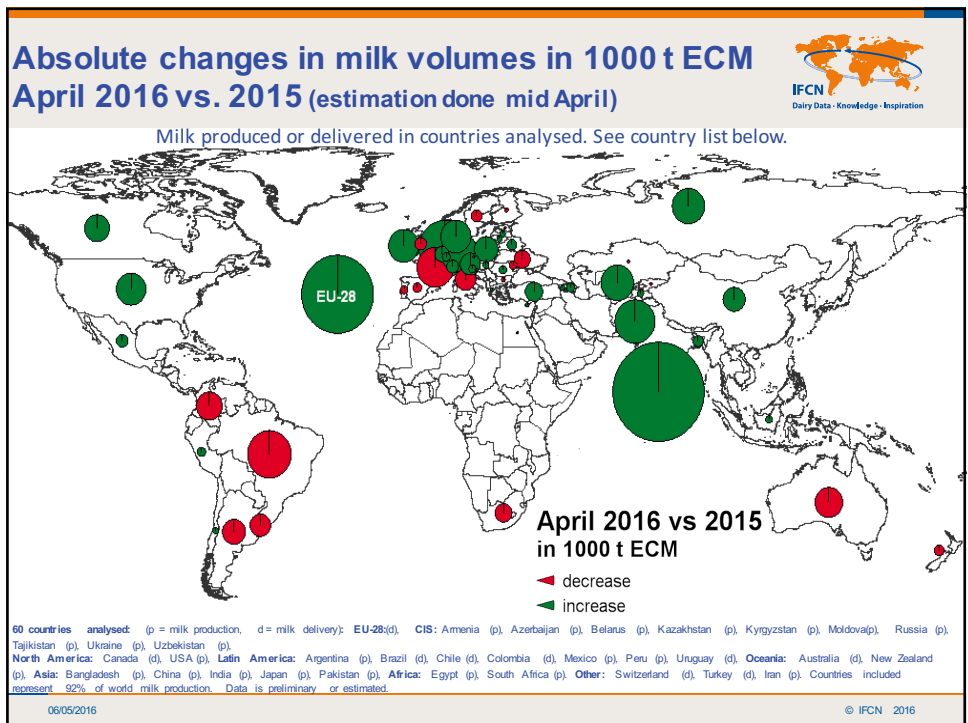
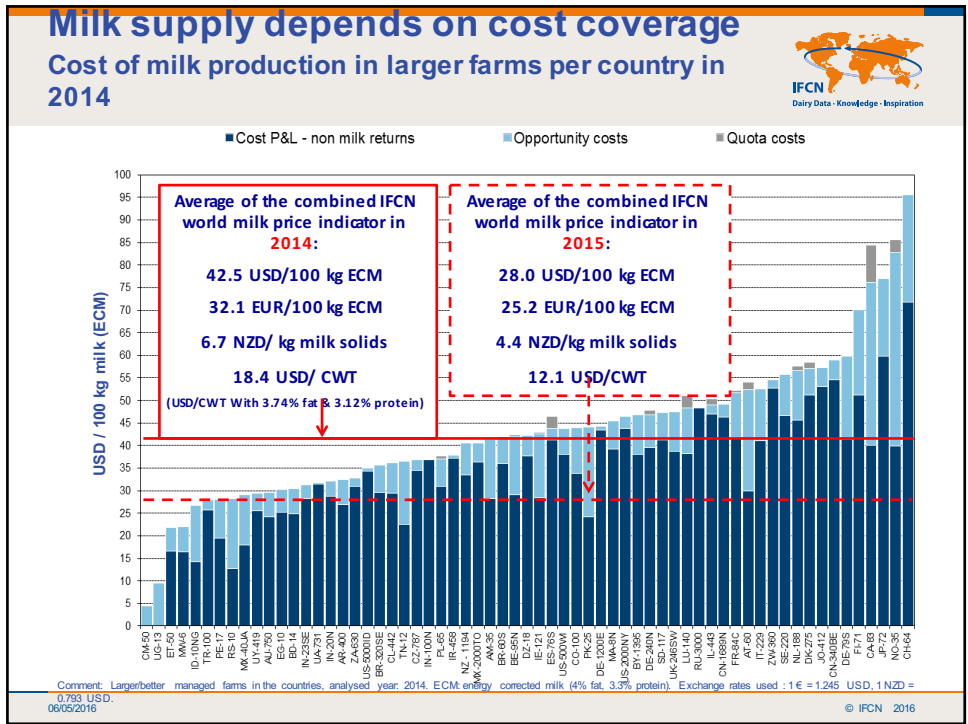
Perspective of IFCN- On Milk Production, Prices and India

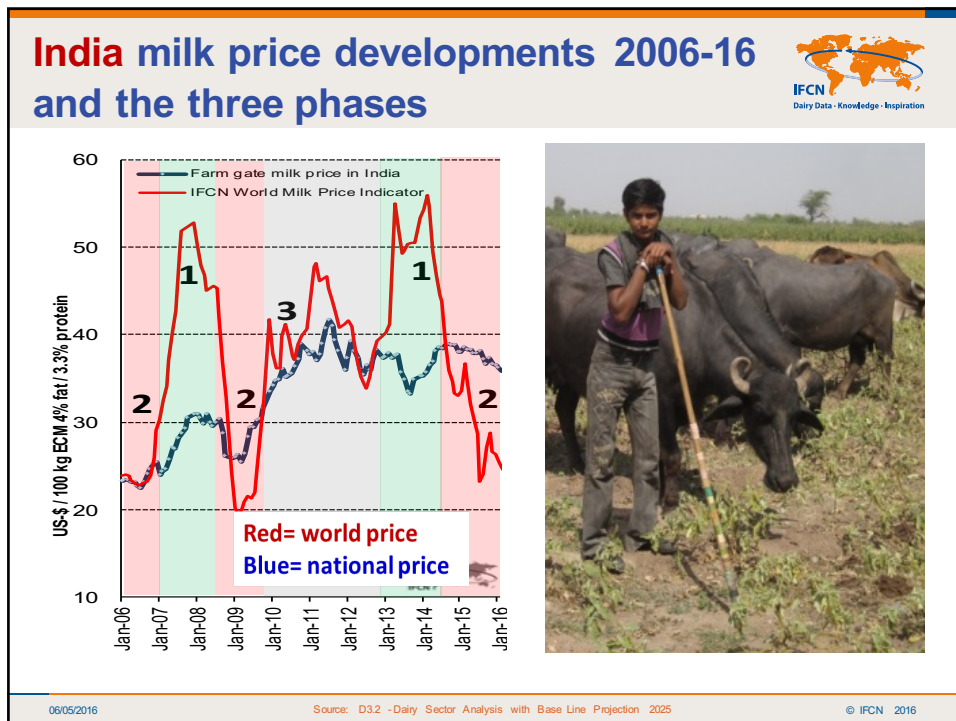
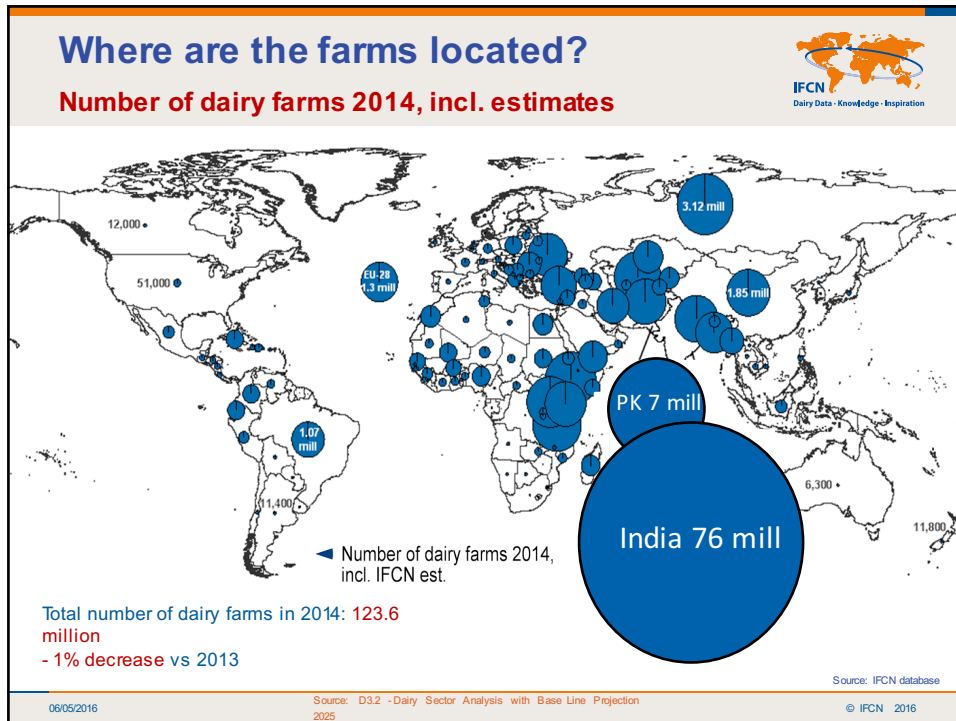
IFCN Dairy Research Network
 Germany, associated with University Kiel
 Prashant Tripathi, Network Manager
 Prashant.Tripathi@ifcndairy.org

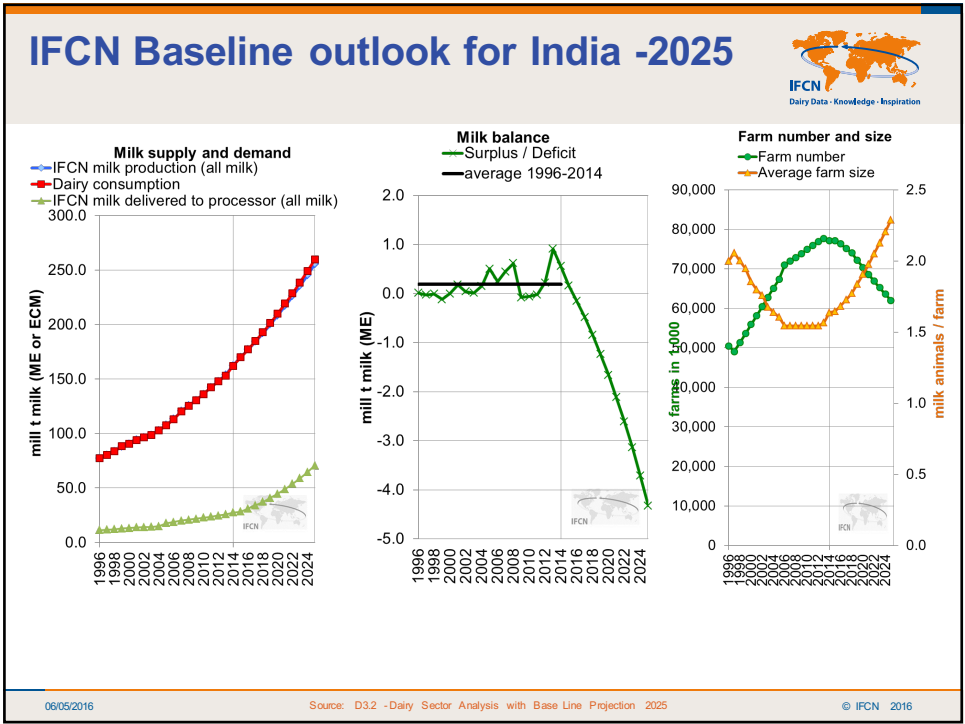
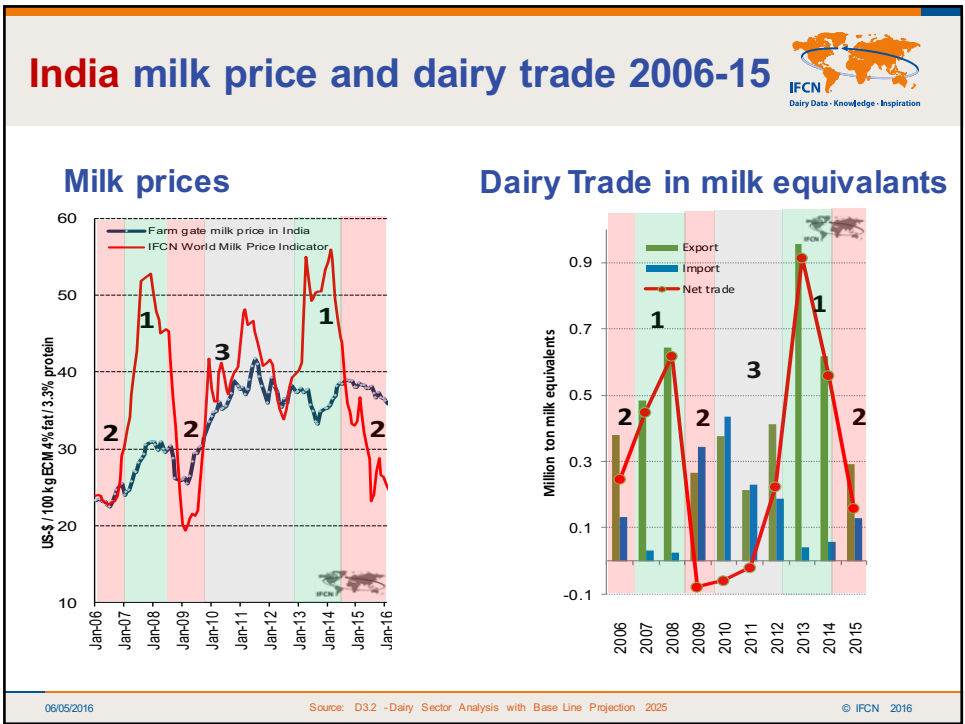
06/05/2016 © IFCN 2016

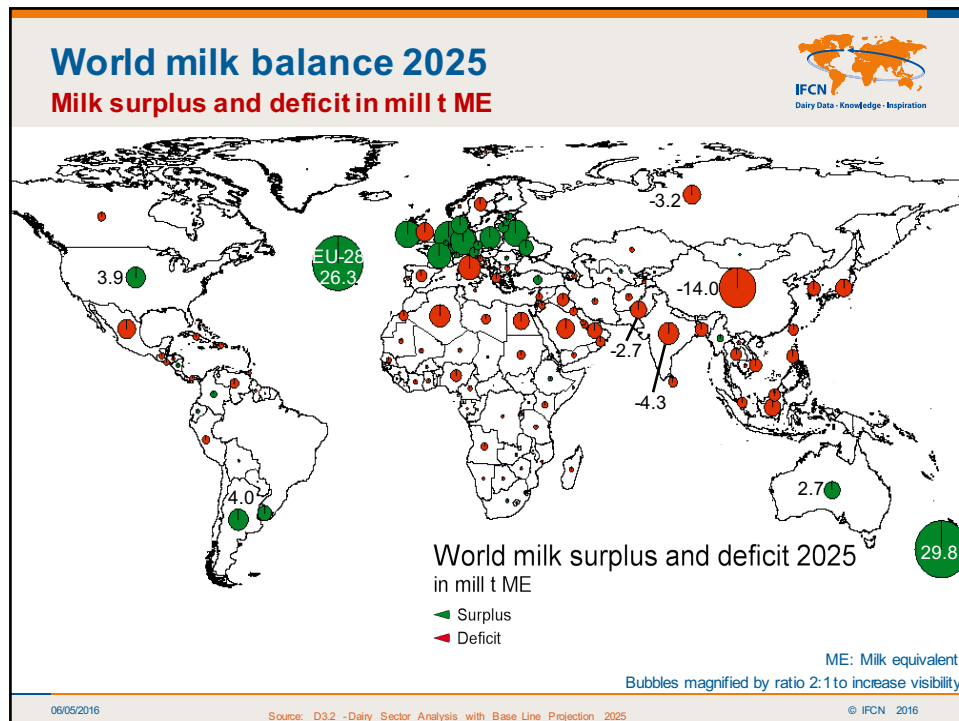












Sum up

1. The third world dairy crisis is the longest one in the last 15 years due to EU post quota reaction. Nevertheless we have indicators to monitor it in real time.
2. Long term average world milk price will continue as in the last years – Ø 40 USD/100 kg ECM
3. India to become a net importer in future.

06/05/2016 © IFCN 2016

Thank you for your attention



Network of researchers

Conference 2015
hosted by GEA



Network of companies

Conference 2015
hosted by Cargill and Elanco



Dairy Research Center in Kiel

This presentation is the result of a large number of people working together since 2000.



Additional slides once needed

