

Dairy Markets and Policy

October 25, 2023



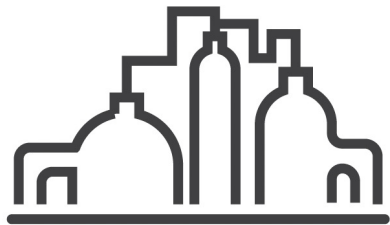
DAIRY
INNOVATION HUB

Wisconsin *is* America's Dairyland

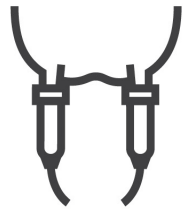
5,817

DAIRY FARMS

(as of Sept. 1, 2023)



more farms than
any other state



31.9

BILLION

pounds of milk
produced annually



1ST NATIONALLY

in cheese
production



2ND NATIONALLY

in milk
production



1,269,000



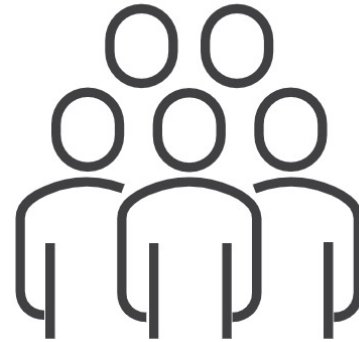
*That's almost half
as many as 1950!*



DAIRY
INNOVATION HUB

Wisconsin *is* America's Dairyland

EVERY



157K JOBS

in Wisconsin are dairy farming or processing related

IN WISCONSIN GENERATES

\$36,000

in economic activity per year.

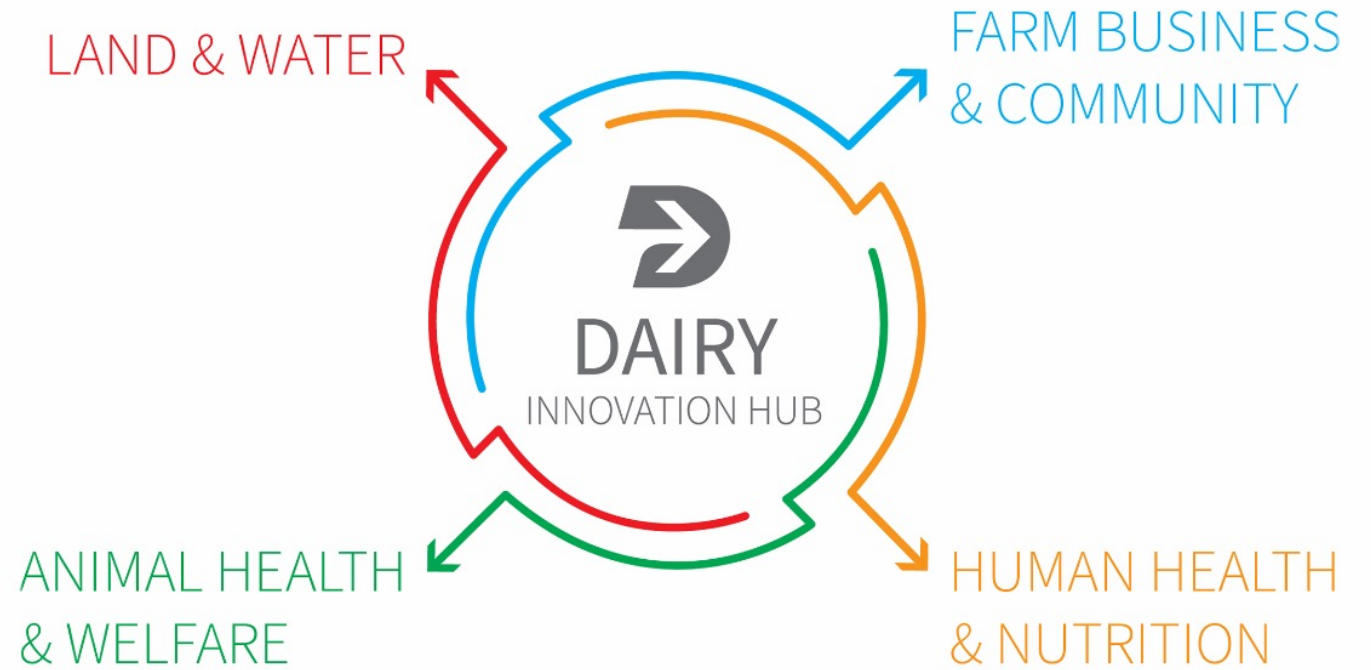
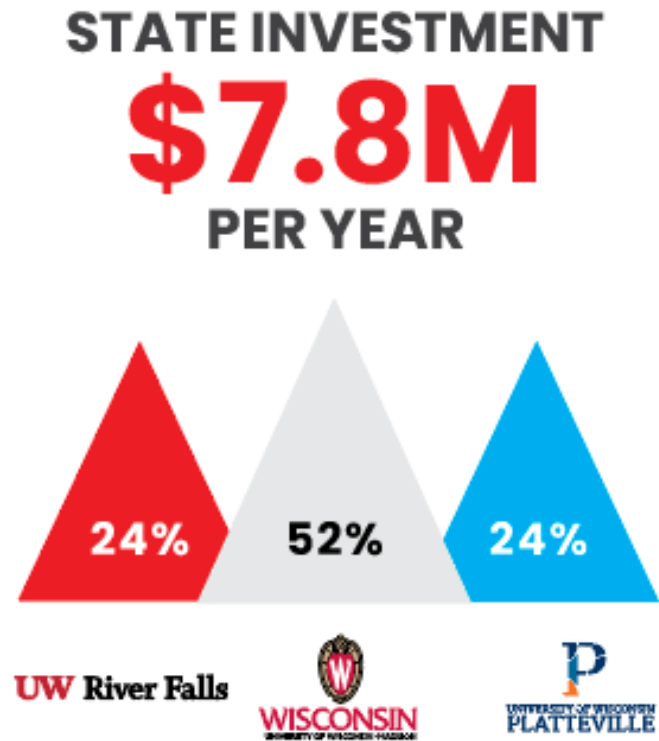
\$45.6
BILLION

in economic activity to the state of Wisconsin

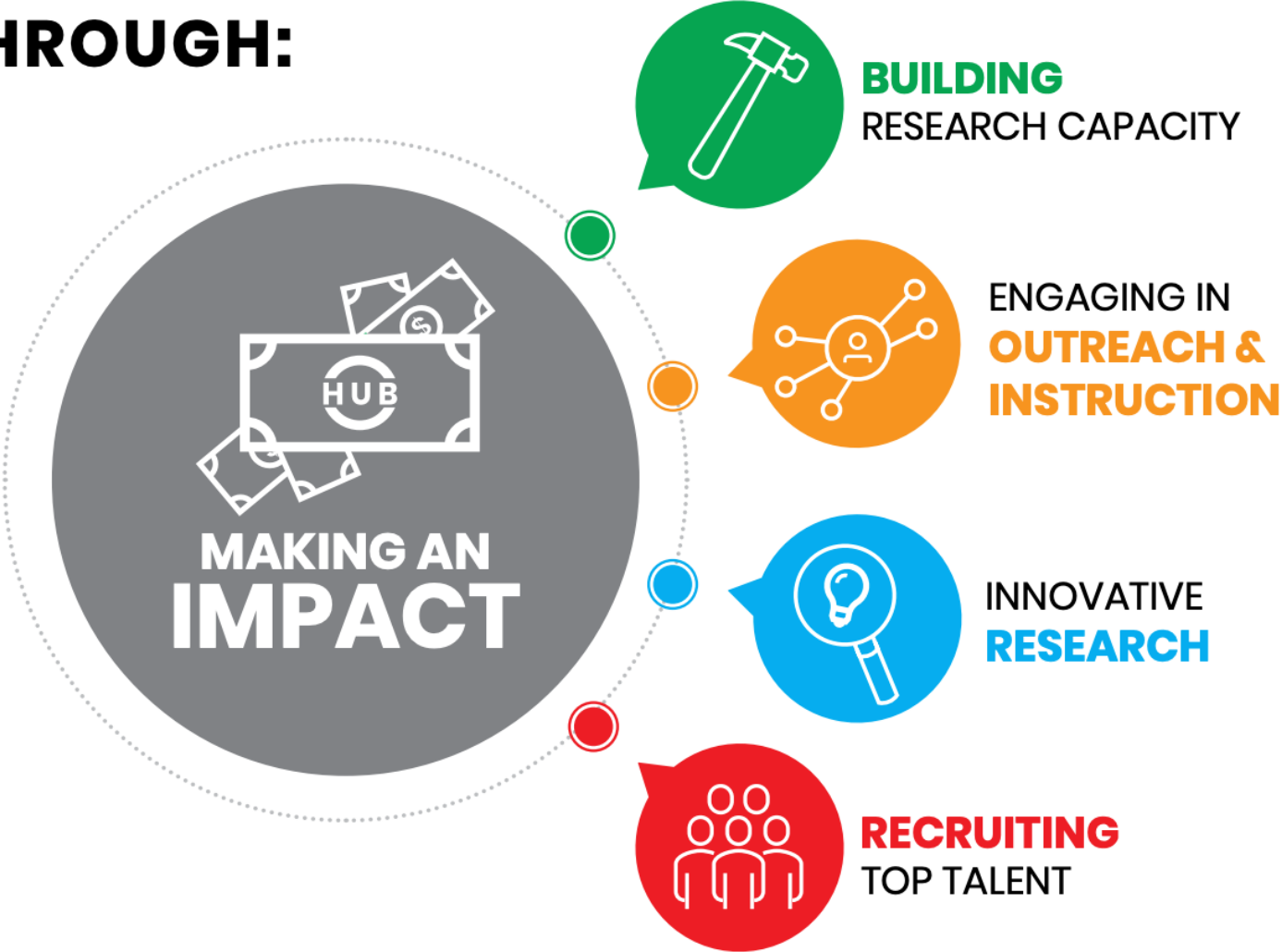


DAIRY
INNOVATION HUB

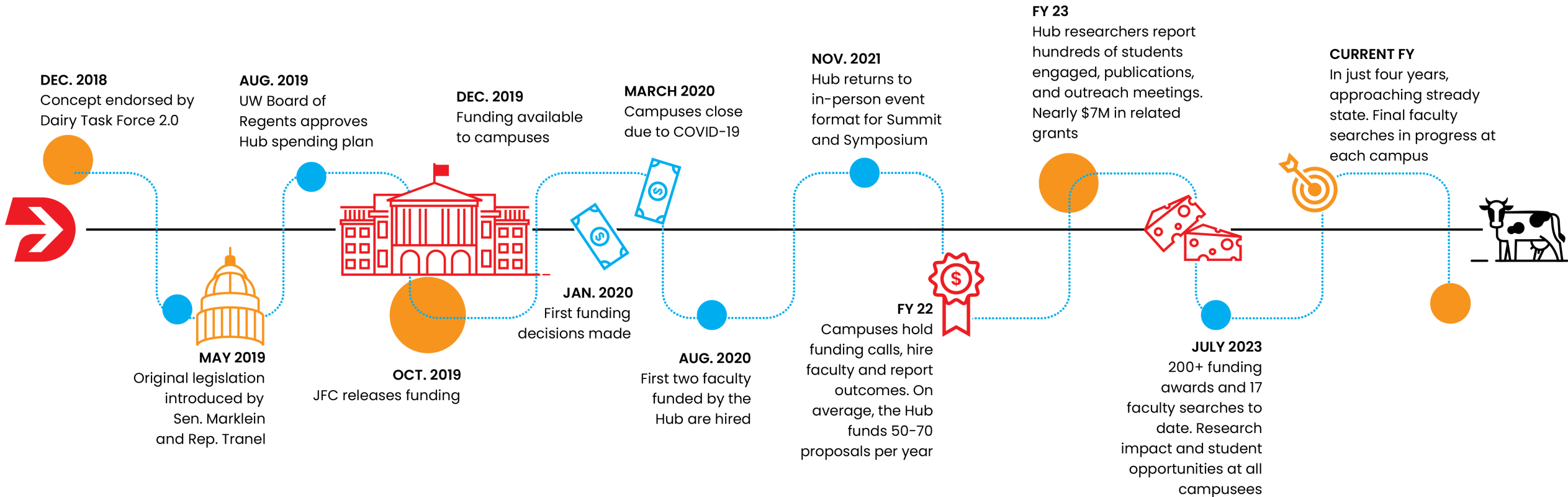
Funding and focus



HUB DOLLARS IMPACT WISCONSIN DAIRY THROUGH:



How did we get here?



ACCOMPLISHMENTS



More than **200+**

PROJECTS FUNDED

across **3** campuses
and **4** priority areas
since 2020

17

Total

**FACULTY
SEARCHES**



attracting top
talent to Wisconsin



\$6.7M

**LEVERAGED
GRANT FUNDS
FROM FY 23**



217

**JOURNAL ARTICLES,
ABSTRACTS, OR POSTERS**

published or in progress
from FY 23



528

STUDENTS

and trainees
engaged in FY 23
Hub research &
infrastructure

259



PRESENTATIONS

to live audiences
in FY 23



DAIRY
INNOVATION HUB

Leveraging partnerships

- Research partnerships with on-campus groups like Center for Dairy Research
- Engaging colleagues outside of agriculture
- Preliminary data for federal and industry grants
- Equipment needed for cutting-edge research and grants
- Highly motivated faculty hires



C-Lock GreenFeed

UW–Madison

C-Lock Inc. GreenFeed unit for enteric methane, carbon dioxide emission and oxygen consumption of large animals fed and managed in free-stall barn and in pasture.



DAIRY
INNOVATION HUB



Beef x dairy crossbred calf housing UW–Madison

72 new individual calf pens to establish a calf rearing facility in underutilized space at the Arlington Ag Research Station. This project expands calf studies and increases flexibility through individual and group housing options



DAIRY
INNOVATION HUB



Kate Creutzinger

Animal and Food Science
UW-River Falls

With Hub funding, Creutzinger is working to characterize cow and calf behaviors after calving in a semi-natural setting, as well as common management practices for early lactation cows in Wisconsin.



DAIRY
INNOVATION HUB



Grace Lewis

Dairy processing
UW–River Falls

In addition to external partnerships for her research, Lewis has been recognized as a mentor and early career professional. Her students won a product development competition for “Root Curd”, a dairy-based product infused with ginger.



Joseph Sanford
School of Agriculture
UW–Platteville

Sanford is evaluating biochar incorporation into two manure management systems; manure storages and anaerobic digestion, to reduce production of GHG, mitigate odors increase profitability of anaerobic digestion by improving biogas quality.



DAIRY
INNOVATION HUB



Milking robots UW-Platteville

Pioneer Farm is home to two Lely A5 Astronaut robotic milkers that were installed and introduced to the 200-cow herd in 2021, funded by the Hub.



Upcoming events

- **Nov. 15 – Dairy Summit – UW–Platteville**
 - *Formatted for a public audience*
- **Jan. 31– Posters on the rotunda – Madison**
 - 12 p.m. – 3 p.m. informational research posters on the State Capitol rotunda
- **May 15 – Dairy Symposium – UW–Madison**
 - *Formatted for an academic audience*
 - *Keynote by Moises Torres-Gonzalez, Dairy Research Institute*



Project showcase



DAIRY
INNOVATION HUB

video tutorial



DAIRY
INNOVATION HUB

Connect with us

- Subscribe to our online newsletter and updates
- Follow us on social media

dairyinnovationhub.wisc.edu

